

PRODUCT INFORMATION PACKET

Model No: 056B34D2027
Catalog No: D115
1 1/2,3600,DP,56,1/60/115/208-230
Open Drip Proof (ODP)



Regal and Marathon are trademarks of Regal Beloit Corporation or one of its affiliated companies.
©2018 Regal Beloit Corporation, All Rights Reserved. MC017097E



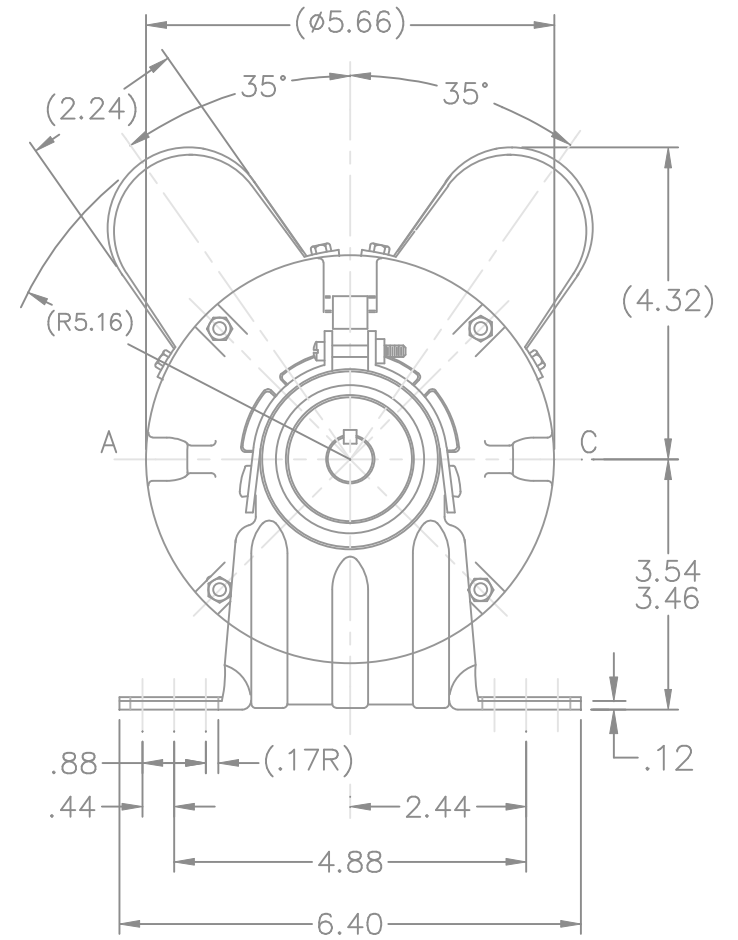
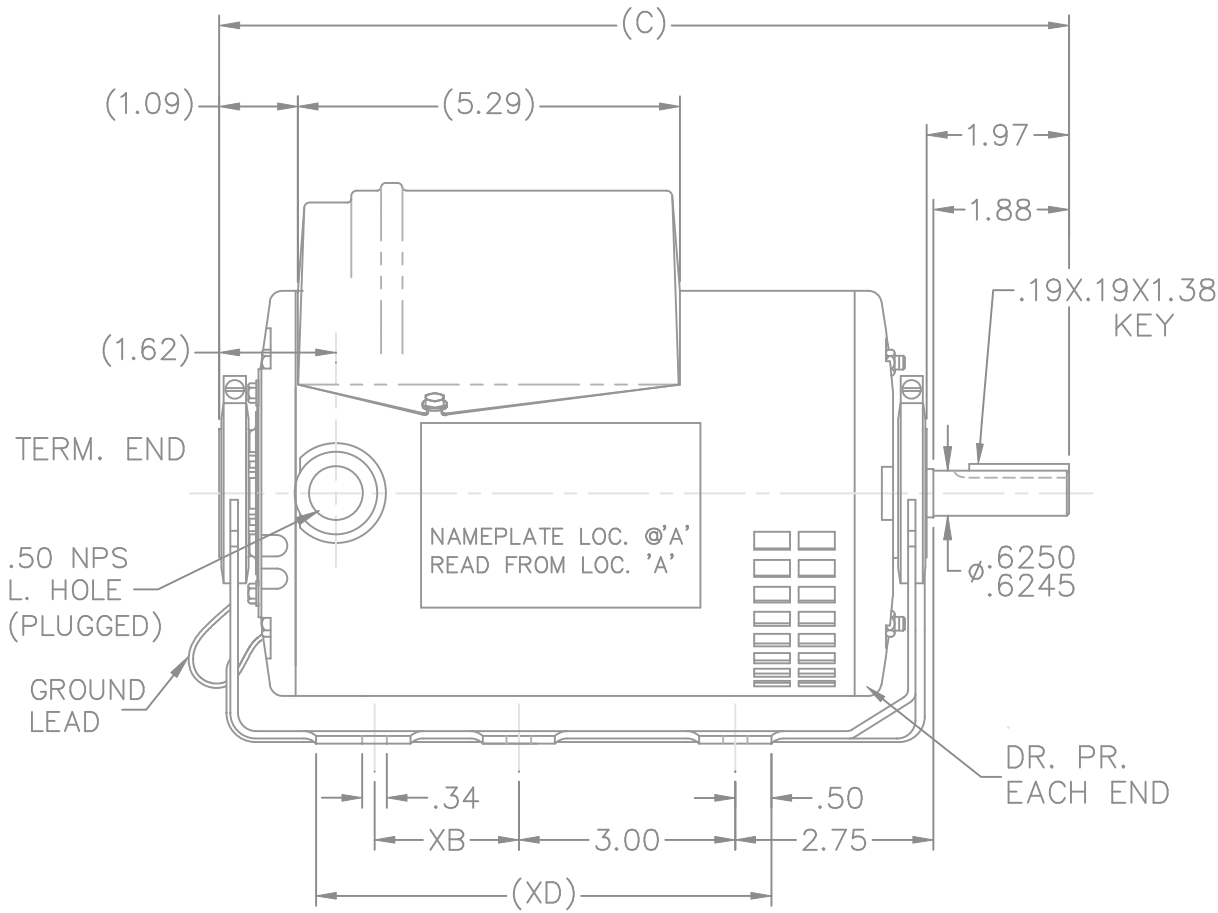
Nameplate Specifications

| | | | |
|----------------------------|----------------|------------------------|-----------------------------|
| Output HP | 1.50 Hp | Output KW | 1.1 kW |
| Frequency | 60 Hz | Voltage | 115/208-230 V |
| Current | 13.0/7.4-6.5 A | Speed | 3450 rpm |
| Service Factor | 1.15 | Phase | 1 |
| Efficiency | 78.7 % | Duty | Continuous |
| Insulation Class | B | Design Code | NO DESIGN CODE |
| KVA Code | H | Frame | 56 |
| Enclosure | Drip Proof | Overload Protector | Automatic |
| Ambient Temperature | 40 °C | Drive End Bearing Size | 6203 |
| Opp Drive End Bearing Size | 6203 | UL | Recognized (Not Protector) |
| CSA | Y | CE | Y |
| IP Code | 22 | | |

Technical Specifications

| | | | |
|-----------------------|-------------------------------|-----------------------|----------------------------|
| Electrical Type | Capacitor Start Capacitor Run | Starting Method | Across The Line |
| Poles | 2 | Rotation | Selective Counterclockwise |
| Mounting | Resilient Base | Motor Orientation | Horizontal |
| Drive End Bearing | Ball | Opp Drive End Bearing | Ball |
| Frame Material | Rolled Steel | Shaft Type | NEMA 56 |
| Overall Length | 11.72 in | Frame Length | 7.75 in |
| Shaft Diameter | 0.625 in | Shaft Extension | 1.97 in |
| Assembly/Box Mounting | F1 Only | | |
| Outline Drawing | A-SS75620-775 | Connection Diagram | A-EE9002F |

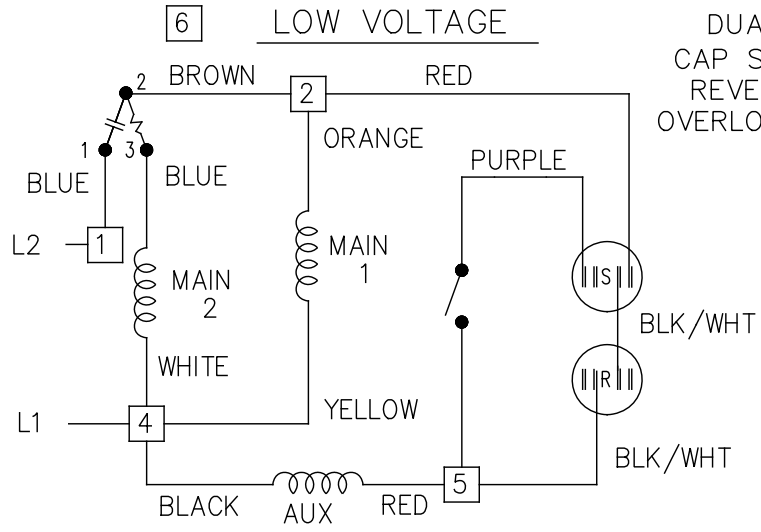
This is an uncontrolled document once printed or downloaded and is subject to change without notice. Date Created: 07/02/2018



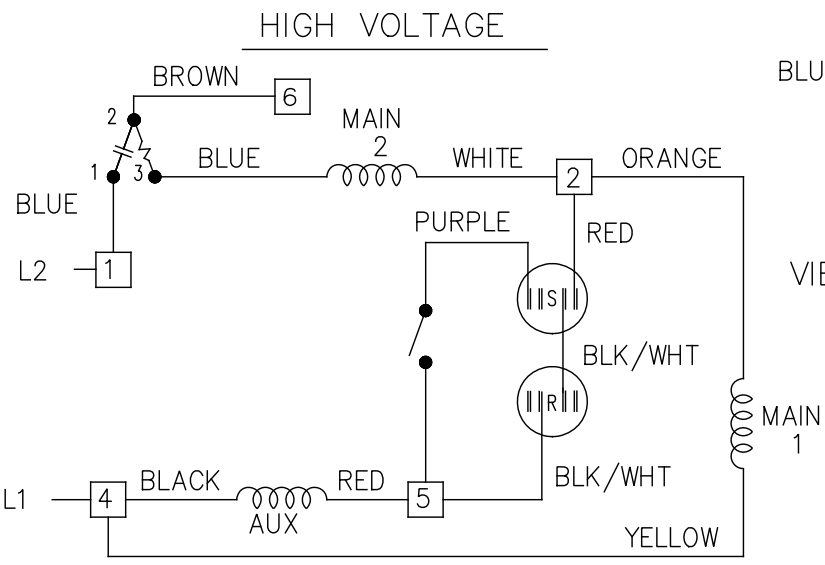
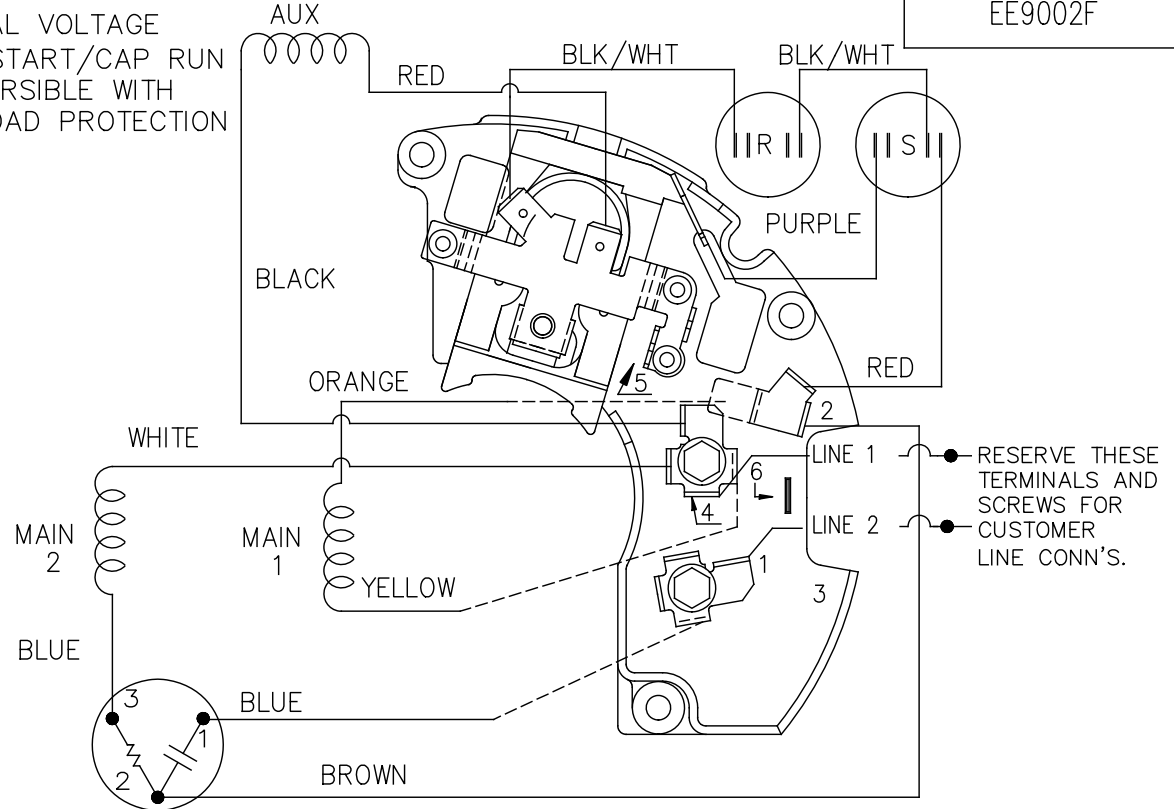
| DASH | XB | XD | C |
|------|----|------|-------|
| 775 | 0 | 6.31 | 11.72 |

| | | | | TOLERANCES UNLESS SPECIFIED | | MARATHON ELECTRIC | DRAWN RM 11-11-1992 | | | | |
|-----|--------------------|-----------|---------------|-----------------------------|--------|-------------------|---------------------|---------------|------|----|------|
| | | | | DEC. | INCHES | | CHK | ML 11-12-1992 | | | |
| | | | | .X | ±.1 | TITLE OUTLINE | APPD JAY 11-16-1992 | | | | |
| 3 | UPDATED DRAWING | TJW | 04/20/2007 | .XX | ±.03 | | SCALE | 3=8 | | | |
| 2 | REDRAWN IN AUTOCAD | TAT | 09-01-2004 | ML | .XXX | | REF | | | | |
| 1 | NEW DRAWING | 3970597 | RM 11-19-1992 | | .XXXX | MAT'L. | FMF | | | | |
| NO. | REVISION | BY & DATE | CHK | ANG | ±' | FINISH | PREV | | | | |
| | | | RFP | | | CAD FILE ss75620 | SIZE | DRAWING NO. | PAGE | OF | REV. |
| | | | DIST | WP | | | A | SS75620 | | | 3 |

THIS DRAWING IN DESIGN AND DETAIL IS OUR PROPERTY AND MUST NOT BE USED EXCEPT IN CONNECTION WITH OUR WORK ALL RIGHTS OF DESIGN AND INVENTION ARE RESERVED THIS IS AN ELECTRONICALLY GENERATED DOCUMENT - DO NOT SCALE THIS PRINT



DUAL VOLTAGE
CAP START/CAP RUN
REVERSIBLE WITH
OVERLOAD PROTECTION




LOW VOLTAGE CCW ROTATION SHOWN.

FOR HIGH VOLTAGE
CONNECT BROWN TERM 2 TO TERM 6.
CONNECT WHITE TERM 4 TO TERM 2.

TO REVERSE ROTATION EITHER
VOLTAGE INTERCHANGE RED
LEAD WITH BLACK LEAD.

DASH LINES INDICATE LEADS CONNECTED
TO MOTOR SIDE OF SWITCH.

| | | | | | | |
|-----|---|---------------|-----------------------------|--------|---|---------------------|
| 5 | REVISED LINE 2 LOCATION | RM 01-28-1991 | TOLERANCES UNLESS SPECIFIED | |  Regal Beloit America, Inc. | DRAWN ML 02-11-1988 |
| 4 | UPDATED SCHEMATIC PER CN 6014 | DA 08-01-1990 | DEC. | INCHES | | CHK FG 02-11-1988 |
| 3 | RED LEAD FROM AUX WAS ON ANGLE TERM. | DA 07-02-1990 | .X | ± - | | APPD DNR 03-11-1988 |
| | PURPLE LEAD WAS RED CN 6014 | | .XX | ± - | | SCALE 1=1 |
| 2 | ADDED CUSTOMER CONNECTION NOTE. CN 6011 | BW 08-03-1989 | .XXX | ± - | | REF |
| 1 | NEW DRAWING | ML 08-19-1988 | .XXXX | ± - | MAT'L. | FMF |
| NO. | REVISION | BY & DATE | CHK | ANG | FINISH | PREV |

THIS DRAWING IN DESIGN AND DETAIL IS OUR PROPERTY AND MUST NOT BE USED EXCEPT IN CONNECTION WITH OUR WORK ALL RIGHTS OF DESIGN AND INVENTION ARE RESERVED THIS IS AN ELECTRONICALLY GENERATED DOCUMENT - DO NOT SCALE THIS PRINT

| | | | | | |
|---------|------------------|--------|---------------------|---------|--------|
| RFP | CAD FILE EE9002F | SIZE A | DRAWING NO. EE9002F | PAGE OF | REV. 5 |
| DIST WP | | | | | |

